

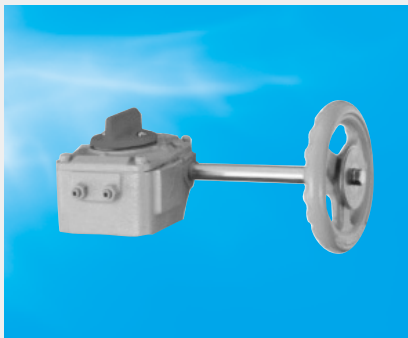
Manual Actuators

Manual actuators consist of three types: the lock lever, the worm gear and the center handle type. The design depends on the model of valve that it will be used with. The photographs below show the manual actuators for the 700G.



Lock lever type

Opening and closing operations are conducted by merely turning the lever 90 degrees. The 10-stage locking mechanism allows flow rate control.



Worm gear type

The worm wheel works as a gear reducer to greatly reduce the torque required for extremely light open and close operations. The valve opening angle can be set as desired for completely stepless control of the flow rate.



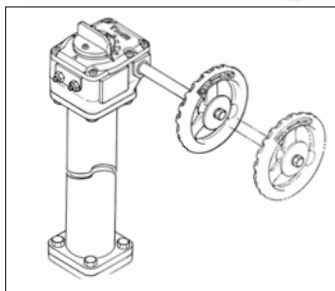
Center handle type

The planetary gear works as a gear reducer to greatly reduce the torque required for extremely light open and close operations. The valve opening angle can be set as desired for completely stepless control of the flow rate.

Options

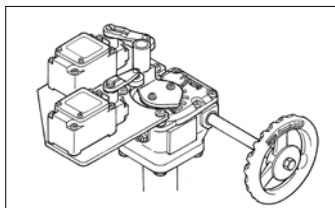
Long-neck and long handle shaft

Installs to gear boxes or extends handle shafts.



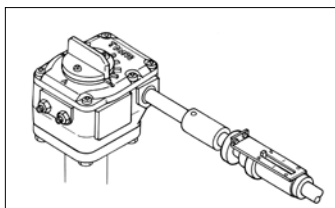
Degree of open output

By installing a limit switch, a fully open or fully closed signal is output.



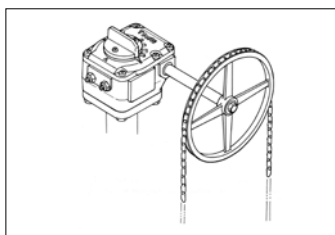
Screw indicator

Tells, right at the device, how open it is even if the handle shaft is extended.



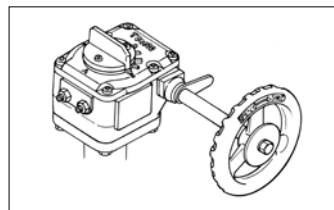
Chain wheel

Valves in high or difficult to reach places can be operated by a chain.



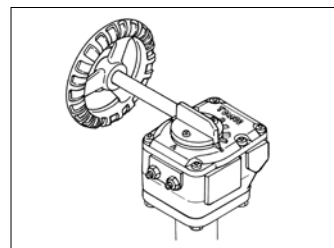
Handle lock

Prevents handle rotation caused by vibration and can maintain a mid-way open position.



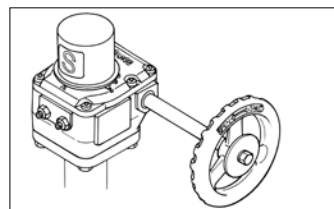
Reverse operator

Enables operation with the handle shaft placed on the opposite side.



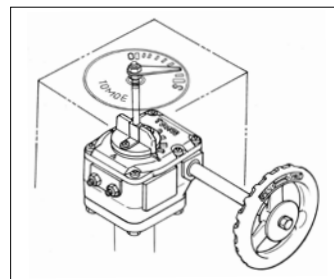
Post indicator

Degree of opening can be verified at a glance.



Indicator for thermal retention enclosures

Indicator allows verification even if the gear box is enclosed for thermal insulation.



Options in the diagrams above are shown with the 2U worm gear. For details, please consult us.